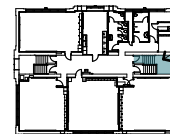


FLOOR LEVEL 2



FLOOR LEVEL 3

USD 383 Bond Referendum

Security and Life Safety

- ✓ New construction to create a storm shelter
- ✓ Remove mobile classroom

Maintenance and Repair

- ✓ Site drainage improvements
- ✓ Exterior masonry wall repairs

Program Enhancement

- ✓ Expand parking lot
- ✓ Construct new flex room
- ✓ Build-out unfinished student support space on 3rd floor

\$1.9M



THEODORE ROOSEVELT ELEMENTARY SCHOOL

MANHATTAN-OGDEN PUBLIC SCHOOLS

developed by BG CONSULTANTS, INC. in collaboration with ALLOY Architecture

- New Construction
- Major Renovation
- Light Renovation