

## USD 383 Bond Referendum

### Security and Life Safety

- ✓ Create dedicated bus lane

### Maintenance and Repair

- ✓ Site drainage improvements
- ✓ Replace kitchen exhaust fans
- ✓ Replace distribution panelboard

### Program Enhancement

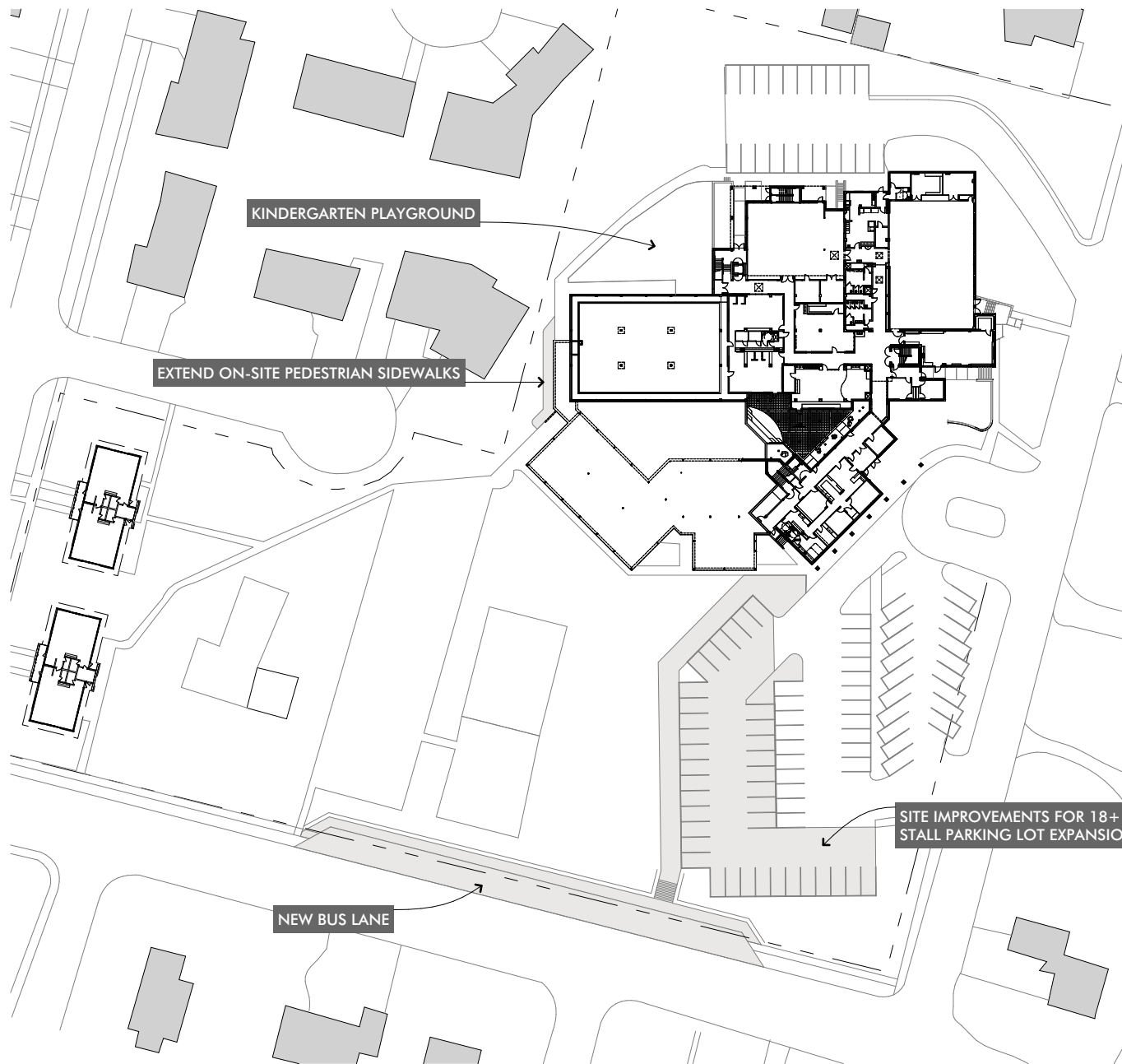
- ✓ Expand parking lot
- ✓ Create dedicated kindergarten playground
- ✓ Connect north and south yards with a sidewalk link

\$945K

0 20 40 60 80 100



-  New Construction
-  Major Renovation
-  Light Renovation



# LEE ELEMENTARY SCHOOL

## MANHATTAN-OGDEN PUBLIC SCHOOLS

developed by BG CONSULTANTS, INC. in collaboration with ALLOY Architecture